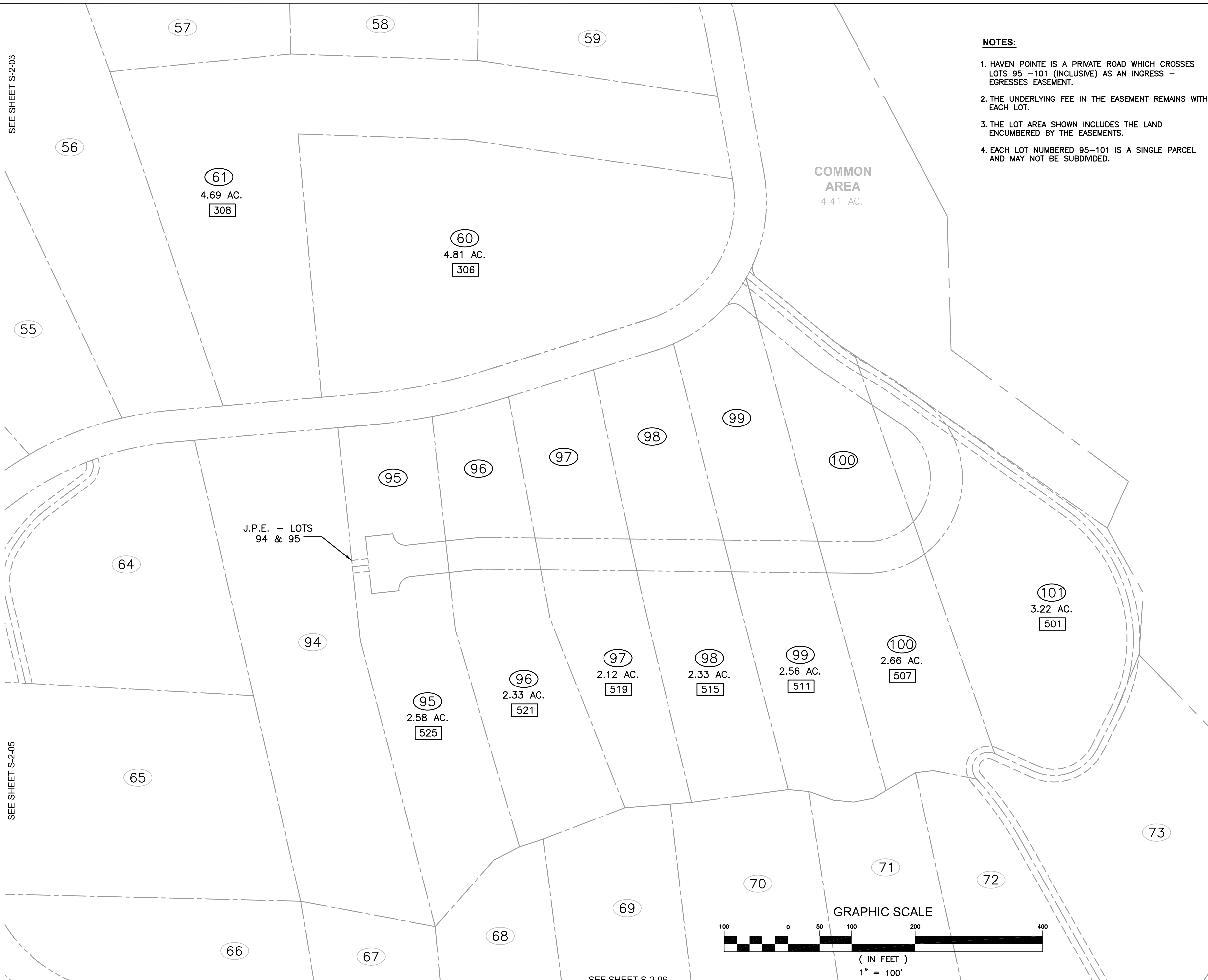


NORTH ORIENTATION  
SEE NOTE #4, SHEET 1

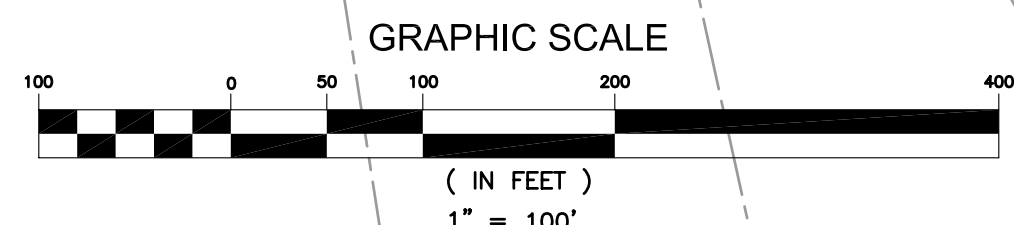
**NOTES:**

1. HAVEN POINTE IS A PRIVATE ROAD WHICH CROSSES LOTS 95 -101 (INCLUSIVE) AS AN INGRESS - EGRESS EASEMENT.
2. THE UNDERLYING FEE IN THE EASEMENT REMAINS WITH EACH LOT.
3. THE LOT AREA SHOWN INCLUDES THE LAND ENCUMBERED BY THE EASEMENTS.
4. EACH LOT NUMBERED 95-101 IS A SINGLE PARCEL AND MAY NOT BE SUBDIVIDED.



**NOTES:**

1. SEE SHEET 1 FOR GENERAL NOTES AND LEGEND.
2. ALL CERTIFICATES AND SIGNATURES ARE ON SHEET 1 OF 10.
3. LINE AND CURVE TABLES ARE ON SHEET 10 OF 10.



**Quantum Environmental & Engineering Services, LLC**  
126 Dante Road  
Knoxville, TN 37918  
PHONE (865) 689-1395, FAX (865) 689-6844

PROJECT NO: 500364	DRAWN BY: DJH			
FILE: 500364-S-2-01.DWG	DESIGNED BY: DRS			
DATE: 05-09-08	CHECKED BY: JMP			
SCALE: 1"=100'	CADQA: QE2			
REV. DATE: N/A	REV: 0	0	05-09-08	ORIGINAL ISSUE
		NO.	DATE	DESCRIPTION OF REVISION

**RECORD PLAT OF HIGHLAND RESERVE  
PHASE 2 - LOTS 60,61,95-101**

**4th CIVIL DISTRICT  
ROANE COUNTY, TENNESSEE**

REFERENCE:  
D.B. 1097  
PG. 931

OWNER / DEVELOPER:  
HIGHLAND RESERVE, LLC  
1000 WATERFORD PLACE  
KINGSTON, TENNESSEE  
37763

**S-2-09**  
SHEET 9 OF 10

S:\CADD\0500364 Highland Reserve\REVISED D\H\FINAL PLAT\500364-S-2-01-PHASE3-design-djh.dwg, FINAL PLAT-SHTS, 6/17/2008 5:12:40 PM